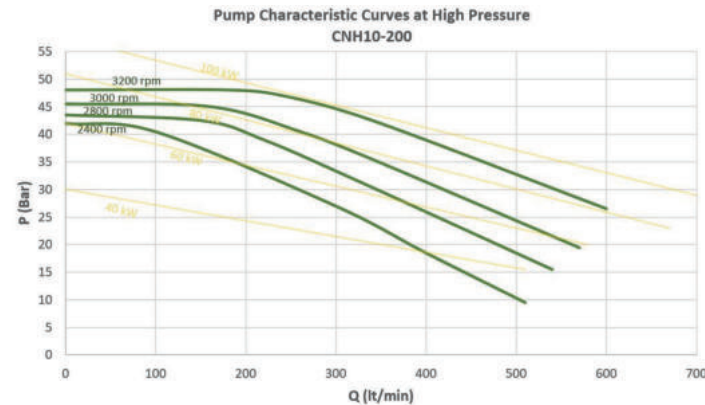
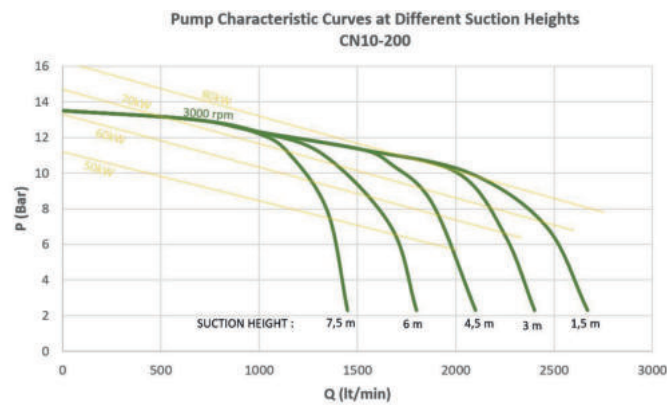


TECHNICAL SPECIFICATIONS

2000 SERIES	CN 10-200 (RPM Inserter)	CN 10-200 (ML)
Low Pressure Flow Rate	2000 l/min (528 gpm)	2000 l/min (528 gpm)
High Pressure Flow Rate	-	-
Normal Pressure	10 bar (145 psi)	10 bar (145 psi)
Normal Pump Speed	3000 rev/min (rpm)	3000 rev/min (rpm)
Maximum Pump Speed	3200 rev/min (rpm)	3200 rev/min (rpm)
Minimum Idle Speed	700 rev/min (rpm)	700 rev/min (rpm)
Minimum Suction Speed	2500 rev/min (rpm)	2500 rev/min (rpm)
Maximum Suction Speed	3200 rev/min (rpm)	3200 rev/min (rpm)
Maximum Pressure	17 bar (246 psi)	17 bar (246 psi)
Weight	109 kg (240 lbs)	87 kg (192 lbs)
Suction Speed, 7.5 m depth	30 seconds	30 seconds
Operating Temperature	-15 °C (5 °F) / +55 °C (131 °F)	-15 °C (5 °F) / +55 °C (131 °F)
Dimensions (L x W x H) (mm/inch)	845 X 787 x 618 (33.3 x 31 x 24.4)	845 x 818 x 618 (33.3 x 32.2 x 24.4)
Thermal Drain Valve	72 °C (161 °F)	72 °C (161 °F)
Reducer Ratio Options	1/2,04 - 1/2,55 - 1/2,95	1/1

3000 SERIES	CNH 10-200 (RPM Inserter)	CNH 10-200 (ML)
Low Pressure Flow Rate	2000 l/min (528 gpm)	2000 l/min (528 gpm)
High Pressure Flow Rate	40 bar 250-400 l/min (66-105 gpm)	40 bar 250-400 l/min (66-105 gpm)
Normal Pressure	10 bar (145 psi)	10 bar (145 psi)
Normal Pump Speed	3000 rev/min (rpm)	3000 rev/min (rpm)
Maximum Pump Speed	3200 rev/min (rpm)	3200 rev/min (rpm)
Minimum Idle Speed	700 rev/min (rpm)	700 rev/min (rpm)
Minimum Suction Speed	2500 rev/min (rpm)	2500 rev/min (rpm)
Maximum Suction Speed	3200 rev/min (rpm)	3200 rev/min (rpm)
Maximum Pressure	54,5 bar (790 psi)	54,5 bar (790 psi)
Weight	122 kg (269 lbs)	112 kg (247 lbs)
Suction Speed, 7.5 m depth	30 seconds	30 seconds
Operating Temperature	-15 °C (5 °F) / +55 °C (131 °F)	-15 °C (5 °F) / +55 °C (131 °F)
Dimensions (L x W x H) (mm/inch)	845 x 827 x 741 (33.3 x 32.6 x 29.2)	845 x 857 x 741 (33.3 x 33.7 x 29.2)
Thermal Drain Valve	72 °C (161 °F)	72 °C (161 °F)
Reducer Ratio Options	1/2,04 - 1/2,55 - 1/2,95	1/1



TS EN 1028, Iso 9001, Iso 14001, Iso 18001, CE ve Gost-R



celiksanaracustu @celiksan.co in celiksan

www.celiksan.com

Ekrem Demirtaş Caddesi No: 37
İtob Organize Sanayi Bölgesi, 35868 Menderes / İzmir / Turkey
+ 90 232 254 57 27 info@celiksan.com

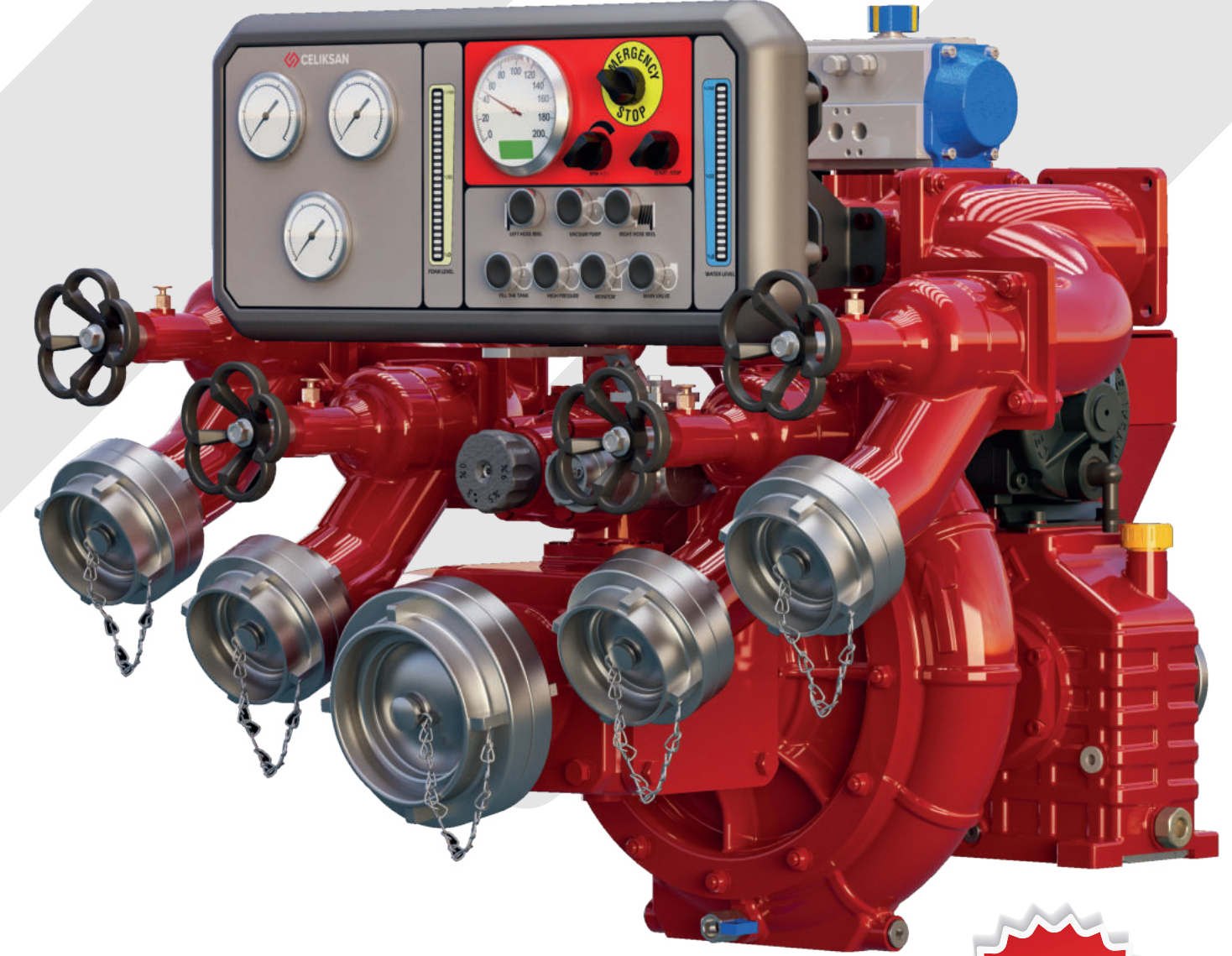
SINCE 1976



EPHESUS SERIES

CN 10-200
CN 10-200 / 40-250

PATENTED



**NEW
PRODUCT**

CELIKSAN
one brand

EPHESUS SERIES

CN 10-200



General Features

Low pressure pump

Compatible with a wide range of modifications

Complies with EN 1028 standards (Document No: 056632)

Maintenance-free mechanical seal and vacuum pump

Lightweight alloy, high quality anodized aluminum body

Suitable Mounting design for vehicles all over the world

High performance automatic suction system

Low pressure with single stage aluminum fan

Low sound level

Hot water tank for use in cold climates

Thermal drain valve 72°C

CN 10-200 Fire Pumps;

It is the patented pioneer series of Celiksan company. This series, which is one of the world's market cornerstones, provides a service that never disappoints by providing unparalleled performance in the segment of fire pumps developed through research and development studies, where competition is at the highest level with its modern lines.

Options

Distribution valve options (straight, angled, flanged)

Various adapter options

Body that can rotate clockwise and counterclockwise

Control Panel

Foam proportioning system

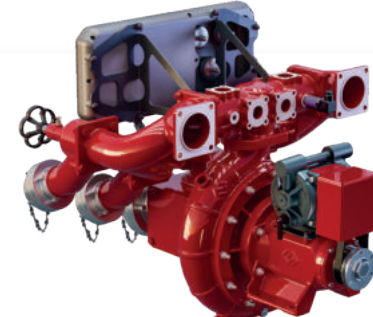
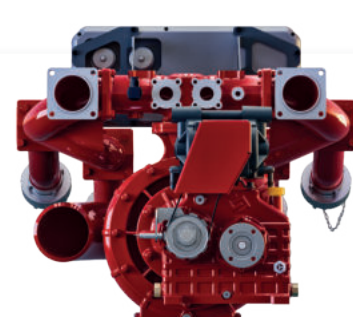
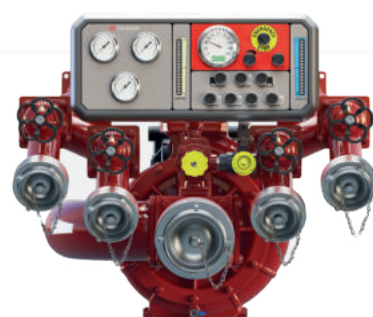
Modular collector (distributor) system

Bronze body option

Reducer ratio options (1/2,04 - 1/2,55 - 1/2,95)

Oil cooling system for reducer pumps

Mechanical oil pressure control in reducer pumps



EPHESUS SERIES

EPHESUS SERIES

CNH 10-200 / 40-250



CN 10-200 / 40-250 Fire Pumps;

It is the patented pioneer series of Celiksan company. This series, which is one of the world's market cornerstones, provides a service that never disappoints by providing unparalleled performance in the segment of fire pumps developed through research and development studies, where competition is at the highest level with its modern lines.

Options

Distribution valve options (straight, angled, flanged)

Various adapter options

Body that can rotate clockwise and counterclockwise

Control Panel

Foam proportioning system

Modular collector (distributor) system

Bronze body option

Reducer ratio options (1/2,04 - 1/2,55 - 1/2,95)

Oil cooling system for reducer pumps

Mechanical oil pressure control in reducer pumps

General Features

Low and high pressure pump

Compatible with a wide variety of modifications

Complies with EN 1028 standards (Document No: 056632)

Maintenance-free mechanical seal and vacuum pump

Easy to clean high pressure filter

Light alloy high quality anodized aluminum body

Suitable mounting design for vehicles all over the world

High performance automatic suction system

Low pressure single stage aluminum fan

High pressure single stage bronze fan

High pressure by-pass system

Low sound level

Hot water tank for use in cold climate

Thermal drain valve 72°C

